



### STANDARD FEATURES

- Premium 18 gauge G90 galvanized steel construction
- AMCA certified aluminum blade fans with TEFC motor standard
- UL listed color correct fluorescent light fixtures
- 20 x 20 Industry standard filters
- 100 F.P.M. standard booth velocity
- Welded tube steel product doors
- Easy nut & bolt assembly with 3D exploded view drawings

### INDUSTRIES FOR CROSSDRAFT SPRAY BOOTHS



Aerospace  
& Defense



Manufacturing  
& Industrial



Automotive



Transit Bus  
& Rail



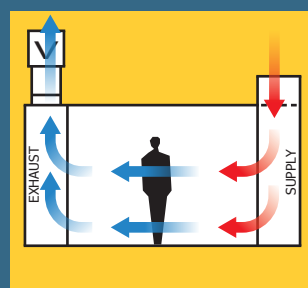
Heavy Equipment  
& Fleet Refinish



Marine

Rohner Crossdraft Paint Spray Booths are a great way to bring the advantages of a horizontal airflow booth into your facility.

Crossdraft (ICD) Spray Booths and Modified Crossdraft (MCD) Spray Booths provide a clean and controlled environment for finishing a variety of large and small products, and they can be designed as drive-in/drive-out or as flow-through production.



CROSSDRAFT AIRFLOW



OPTIONAL COMPACT PLC  
BASED CONTROL CENTER



OPTIONAL FILTERED  
PRODUCT DOORS

### PREMIUM COMPONENTS

Optional heated Makeup Air Units (M.A.U.) can be added with high temperature bake cycle and energy saving recycle.

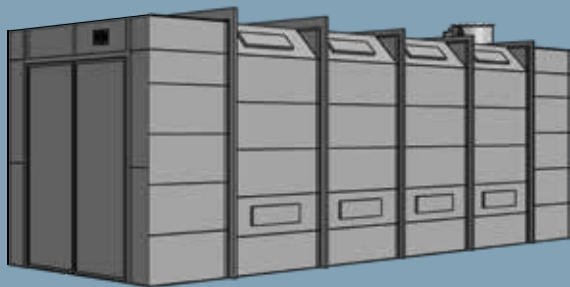
AMCA certified fans with EPACT compliant TEFC motors are standard. Fans have remote bearing lubrication, aluminum spark resistant blades, and heavy duty powder coated housing.

Booths are designed to meet or exceed NFPA33 and IFC Chapter 24 requirements. Consult your local authority having jurisdiction for additional requirements before purchasing.

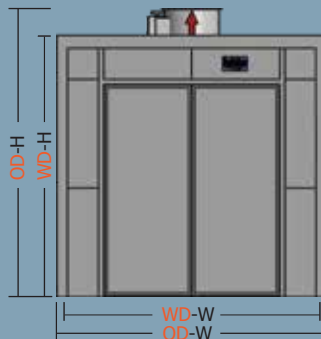
# ICD - INDUSTRIAL CROSSDRAFT BOOTH

| MODEL              | Working Dim. (WD) |        |         | Working Dim. (WD) |         |           | Light Fixtures | Intake Filters | Exhaust Filters | Exhaust Fan Sized at 100FPM @ 1/2" S.P. |
|--------------------|-------------------|--------|---------|-------------------|---------|-----------|----------------|----------------|-----------------|---|
|                    | W                 | H      | D       | W                 | H       | D         |                |                |                 |   |
| <b>14'-0" Wide</b> |                   |        |         |                   |         |           |                |                |                 |   |
| ICD-14-10-24       | 14'-0"            | 10'-0" | 23'-10" | 15'-4"            | 10'-8"  | 24'-2"    | 9              | 24             | 24              | 36" 5hp - 14,000cfm                     |
| ICD-14-10-26       | 14'-0"            | 10'-0" | 25'-11" | 15'-4"            | 10'-8"  | 26'-3"    | 10             | 24             | 24              | 36" 5hp - 14,000cfm                     |
| ICD-14-10-28       | 14'-0"            | 10'-0" | 27'-11" | 15'-4"            | 10'-8"  | 28'-3"    | 10             | 24             | 24              | 36" 5hp - 14,000cfm                     |
| ICD-14-10-30       | 14'-0"            | 10'-0" | 29'-11" | 15'-4"            | 10'-8"  | 30'-3"    | 11             | 24             | 24              | 36" 5hp - 14,000cfm                     |
| ICD-14-10-32       | 14'-0"            | 10'-0" | 31'-11" | 15'-4"            | 10'-8"  | 32'-3"    | 12             | 24             | 24              | 36" 5hp - 14,000cfm                     |
| BWP-14-10          | -                 | -      | -       | 14'-4"            | 10'-2"  | 3'-8 1/2" | -              | -              | 32              | 36" 5hp - 14,000cfm                     |
| PD-10-10           | 9'-0"             | 9'-6"  | -       | 10'-0"            | 10'-0"  | -         | -              | -              | -               | -                                       |
| ICD-14-12-24       | 14'-0"            | 12'-0" | 29'-1"  | 15'-4"            | 12'-8"  | 24'-2"    | 11             | 34             | 34              | 42" 5hp - 16,800cfm                     |
| ICD-14-12-26       | 14'-0"            | 12'-0" | 31'-11" | 15'-4"            | 12'-8"  | 26'-3"    | 12             | 34             | 34              | 42" 5hp - 16,800cfm                     |
| ICD-14-12-28       | 14'-0"            | 12'-0" | 23'-10" | 15'-4"            | 12'-8"  | 28'-3"    | 12             | 34             | 34              | 42" 5hp - 16,800cfm                     |
| ICD-14-12-30       | 14'-0"            | 12'-0" | 25'-11" | 15'-4"            | 12'-8"  | 30'-3"    | 13             | 34             | 34              | 42" 5hp - 16,800cfm                     |
| ICD-14-12-32       | 14'-0"            | 12'-0" | 27'-11" | 15'-4"            | 12'-8"  | 32'-3"    | 13             | 34             | 34              | 42" 5hp - 16,800cfm                     |
| BWP-14-12          | -                 | -      | -       | 14'-4"            | 12'-2"  | 4'-2 1/2" | -              | -              | 40              | 42" 5hp - 16,800cfm                     |
| PD-10-12           | 9'-0"             | 9'-6"  | -       | 10'-0"            | 12'-0"  | -         | -              | -              | -               | -                                       |
| <b>16'-0" Wide</b> |                   |        |         |                   |         |           |                |                |                 |   |
| ICD-16-16-32       | 16'-0"            | 16'-0" | 31'-11" | 17'-4"            | 16'-8"  | 32'-3"    | 21             | 48             | 48              | 42" 7.5hp - 25,600cfm                   |
| ICD-16-16-40       | 16'-0"            | 16'-0" | 40'-0"  | 17'-4"            | 16'-8"  | 40'-4"    | 26             | 48             | 48              | 42" 7.5hp - 25,600cfm                   |
| ICD-16-16-48       | 16'-0"            | 16'-0" | 48'-1"  | 17'-4"            | 16'-8"  | 48'-5"    | 31             | 48             | 48              | 42" 7.5hp - 25,600cfm                   |
| ICD-16-16-56       | 16'-0"            | 16'-0" | 56'-2"  | 17'-4"            | 16'-8"  | 56'-6"    | 36             | 48             | 48              | 42" 7.5hp - 25,600cfm                   |
| ICD-16-16-60       | 16'-0"            | 16'-0" | 60'-3"  | 17'-4"            | 16'-8"  | 60'-7"    | 38             | 48             | 48              | 42" 7.5hp - 25,600cfm                   |
| BWP-16-16          | -                 | -      | -       | 16'-4"            | 16'-2"  | 4'-2 1/2" | -              | -              | 72              | 42" 7.5hp - 25,600cfm                   |
| PD-12-12           | 11'-0"            | 11'-6" | -       | 12'-0"            | 12'-0"  | -         | -              | -              | -               | -                                       |
| <b>18'-0" Wide</b> |                   |        |         |                   |         |           |                |                |                 |   |
| ICD-18-16-32       | 18'-0"            | 16'-0" | 31'-11" | 19'-8"            | 16'-10" | 32'-3"    | 24             | 64             | 64              | 48" 7.5hp - 28,800cfm                   |
| ICD-18-16-40       | 18'-0"            | 16'-0" | 40'-0"  | 19'-8"            | 16'-10" | 40'-4"    | 29             | 64             | 64              | 48" 7.5hp - 28,800cfm                   |
| ICD-18-16-48       | 18'-0"            | 16'-0" | 48'-1"  | 19'-8"            | 16'-10" | 48'-5"    | 35             | 64             | 64              | 48" 7.5hp - 28,800cfm                   |
| ICD-18-16-56       | 18'-0"            | 16'-0" | 56'-2"  | 19'-8"            | 16'-10" | 56'-6"    | 41             | 64             | 64              | 48" 7.5hp - 28,800cfm                   |
| ICD-18-16-60       | 18'-0"            | 16'-0" | 60'-3"  | 19'-8"            | 16'-10" | 60'-7"    | 44             | 64             | 64              | 48" 7.5hp - 28,800cfm                   |
| BWP-18-16          | -                 | -      | -       | 18'-4"            | 16'-2"  | 4'-8 1/2" | -              | -              | 80              | 48" 7.5hp - 28,800cfm                   |
| PD-14-12           | 13'-0"            | 11'-6" | -       | 14'-0"            | 12'-0"  | -         | -              | -              | -               | -                                       |
| <b>20'-0" Wide</b> |                   |        |         |                   |         |           |                |                |                 |   |
| ICD-20-16-32       | 20'-0"            | 16'-0" | 31'-11" | 21'-8"            | 16'-10" | 32'-3"    | 26             | 64             | 64              | 48" 10hp - 32,000cfm                    |
| ICD-20-16-40       | 20'-0"            | 16'-0" | 40'-0"  | 21'-8"            | 16'-10" | 40'-4"    | 32             | 64             | 64              | 48" 10hp - 32,000cfm                    |
| ICD-20-16-48       | 20'-0"            | 16'-0" | 48'-1"  | 21'-8"            | 16'-10" | 48'-5"    | 39             | 64             | 64              | 48" 10hp - 32,000cfm                    |
| ICD-20-16-56       | 20'-0"            | 16'-0" | 56'-2"  | 21'-8"            | 16'-10" | 56'-6"    | 45             | 64             | 64              | 48" 10hp - 32,000cfm                    |
| ICD-20-16-60       | 20'-0"            | 16'-0" | 60'-3"  | 21'-8"            | 16'-10" | 60'-7"    | 48             | 64             | 64              | 48" 10hp - 32,000cfm                    |
| BWP-20-16          | -                 | -      | -       | 20'-4"            | 16'-2"  | 4'-8 1/2" | -              | -              | 88              | 48" 10hp - 32,000cfm                    |
| PD-16-12           | 15'-0"            | 11'-6" | -       | 16'-0"            | 12'-0"  | -         | -              | -              | -               | -                                       |

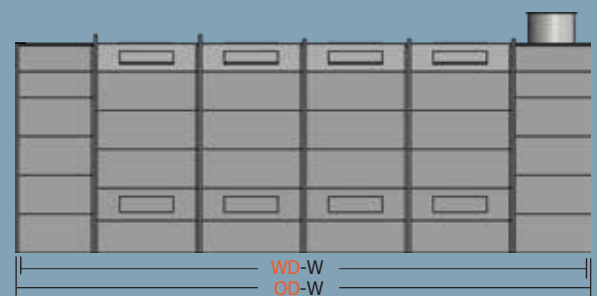
PERSPECTIVE VIEW



FRONT VIEW



SIDE VIEW



NOTE: Model shown includes pant leg plenum with bridge (exhaust) and pant leg plenum with bridge (intake)

## TABLE LEGEND

ICD = Industrial Crossdraft Booth: comes standard with pant leg bridge plenum for exhaust and intake

BWP = Back Wall Plenum: Optional external exhaust plenum (adds depth to the overall dimension)

PD = Product Doors. Optional: Standard, Filtered, Bi-fold, or Tri-fold. Filtered Product Doors can be used in place of an intake plenum

Standard Motors: 1hp and greater are 230/460V three phase, fractional hp motors are 115/230V single phase. Additional motor configurations available.



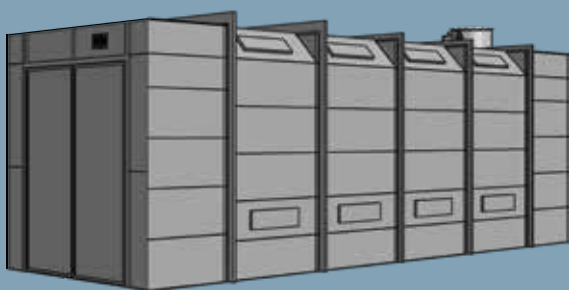
www.rohner-usa.com

888-885-7641

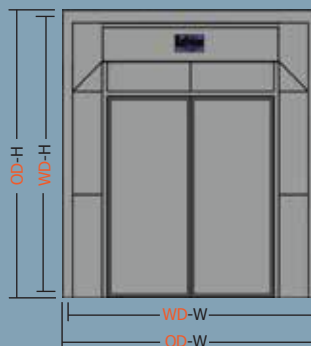
# MCD - MODIFIED CROSSDRAFT BOOTH

| MODEL              | Working Dim. (WD) |        |         | Working Dim. (WD) |         |           | Light Fixtures | Intake Filters | Exhaust Filters | Exhaust Fan Sized at 100FPM @ 1/2" S.P. |
|--------------------|-------------------|--------|---------|-------------------|---------|-----------|----------------|----------------|-----------------|---|
|                    | W                 | H      | D       | W                 | H       | D         |                |                |                 |   |
| <b>14'-0" Wide</b> |                   |        |         |                   |         |           |                |                |                 |   |
| MCD-14-10-24       | 14'-0"            | 10'-0" | 23'-10" | 15'-4"            | 12'-8"  | 24'-2"    | 9              | 20             | 24              | 36" 5hp - 14,000cfm                     |
| MCD-14-10-26       | 14'-0"            | 10'-0" | 25'-11" | 15'-4"            | 12'-8"  | 26'-3"    | 10             | 20             | 24              | 36" 5hp - 14,000cfm                     |
| MCD-14-10-28       | 14'-0"            | 10'-0" | 27'-11" | 15'-4"            | 12'-8"  | 28'-3"    | 10             | 20             | 24              | 36" 5hp - 14,000cfm                     |
| MCD-14-10-30       | 14'-0"            | 10'-0" | 29'-11" | 15'-4"            | 12'-8"  | 30'-3"    | 11             | 20             | 24              | 36" 5hp - 14,000cfm                     |
| MCD-14-10-32       | 14'-0"            | 10'-0" | 31'-11" | 15'-4"            | 12'-8"  | 32'-3"    | 12             | 20             | 24              | 36" 5hp - 14,000cfm                     |
| BWP-14-10          | -                 | -      | -       | 14'-4"            | 10'-2"  | 3'-8 1/2" | -              | -              | 32              | 36" 5hp - 14,000cfm                     |
| PD-10-10           | 9'-0"             | 9'-6"  | -       | 10'-0"            | 10'-0"  | -         | -              | -              | -               | -                                       |
| MCD-14-12-24       | 14'-0"            | 12'-0" | 23'-10" | 15'-4"            | 14'-8"  | 24'-2"    | 11             | 25             | 34              | 42" 5hp - 16,800cfm                     |
| MCD-14-12-26       | 14'-0"            | 12'-0" | 25'-11" | 15'-4"            | 14'-8"  | 26'-3"    | 12             | 25             | 34              | 42" 5hp - 16,800cfm                     |
| MCD-14-12-28       | 14'-0"            | 12'-0" | 27'-11" | 15'-4"            | 14'-8"  | 28'-3"    | 12             | 25             | 34              | 42" 5hp - 16,800cfm                     |
| MCD-14-12-30       | 14'-0"            | 12'-0" | 29'-11" | 15'-4"            | 14'-8"  | 30'-3"    | 13             | 25             | 34              | 42" 5hp - 16,800cfm                     |
| MCD-14-12-32       | 14'-0"            | 12'-0" | 31'-11" | 15'-4"            | 14'-8"  | 32'-3"    | 13             | 25             | 34              | 42" 5hp - 16,800cfm                     |
| BWP-14-12          | -                 | -      | -       | 14'-4"            | 12'-2"  | 4'-2 1/2" | -              | -              | 40              | 42" 5hp - 16,800cfm                     |
| PD-10-12           | 9'-0"             | 11'-6" | -       | 10'-0"            | 12'-0"  | -         | -              | -              | -               | -                                       |
| <b>16'-0" Wide</b> |                   |        |         |                   |         |           |                |                |                 |   |
| MCD-16-16-32       | 16'-0"            | 16'-0" | 31'-11" | 17'-4"            | 18'-8"  | 32'-3"    | 11             | 48             | 48              | 42" 7.5hp - 25,600cfm                   |
| MCD-16-16-40       | 16'-0"            | 16'-0" | 40'-0"  | 17'-4"            | 18'-8"  | 40'-4"    | 12             | 48             | 48              | 42" 7.5hp - 25,600cfm                   |
| MCD-16-16-48       | 16'-0"            | 16'-0" | 48'-1"  | 17'-4"            | 18'-8"  | 48'-5"    | 12             | 48             | 48              | 42" 7.5hp - 25,600cfm                   |
| MCD-16-16-56       | 16'-0"            | 16'-0" | 56'-2"  | 17'-4"            | 18'-8"  | 56'-6"    | 13             | 48             | 48              | 42" 7.5hp - 25,600cfm                   |
| MCD-16-16-60       | 16'-0"            | 16'-0" | 60'-3"  | 17'-4"            | 18'-8"  | 60'-7"    | 13             | 48             | 48              | 42" 7.5hp - 25,600cfm                   |
| BWP-16-16          | -                 | -      | -       | 16'-4"            | 16'-2"  | 4'-2 1/2" | -              | -              | 72              | 42" 7.5hp - 25,600cfm                   |
| PD-12-12           | 11'-0"            | 11'-6" | -       | 12'-0"            | 12'-0"  | -         | -              | -              | -               | -                                       |
| <b>18'-0" Wide</b> |                   |        |         |                   |         |           |                |                |                 |   |
| MCD-18-16-32       | 18'-0"            | 16'-0" | 31'-11" | 19'-8"            | 18'-10" | 32'-3"    | 24             | 56             | 64              | 48" 7.5hp - 28,800cfm                   |
| MCD-18-16-40       | 18'-0"            | 16'-0" | 40'-0"  | 19'-8"            | 18'-10" | 40'-4"    | 29             | 56             | 64              | 48" 7.5hp - 28,800cfm                   |
| MCD-18-16-48       | 18'-0"            | 16'-0" | 48'-1"  | 19'-8"            | 18'-10" | 48'-5"    | 35             | 56             | 64              | 48" 7.5hp - 28,800cfm                   |
| MCD-18-16-56       | 18'-0"            | 16'-0" | 56'-2"  | 19'-8"            | 18'-10" | 56'-6"    | 41             | 56             | 64              | 48" 7.5hp - 28,800cfm                   |
| MCD-18-16-60       | 18'-0"            | 16'-0" | 60'-3"  | 19'-8"            | 18'-10" | 60'-7"    | 44             | 56             | 64              | 48" 7.5hp - 28,800cfm                   |
| BWP-18-16          | -                 | -      | -       | 18'-4"            | 16'-2"  | 4'-8 1/2" | -              | -              | 80              | 48" 7.5hp - 28,800cfm                   |
| PD-14-12           | 13'-0"            | 11'-6" | -       | 14'-0"            | 12'-0"  | -         | -              | -              | -               | -                                       |
| <b>20'-0" Wide</b> |                   |        |         |                   |         |           |                |                |                 |   |
| MCD-20-16-32       | 20'-0"            | 16'-0" | 31'-11" | 21'-8"            | 18'-10" | 32'-3"    | 26             | 64             | 64              | 48" 10hp - 32,000cfm                    |
| MCD-20-16-40       | 20'-0"            | 16'-0" | 40'-0"  | 21'-8"            | 18'-10" | 40'-4"    | 32             | 64             | 64              | 48" 10hp - 32,000cfm                    |
| MCD-20-16-48       | 20'-0"            | 16'-0" | 48'-1"  | 21'-8"            | 18'-10" | 48'-5"    | 39             | 64             | 64              | 48" 10hp - 32,000cfm                    |
| MCD-20-16-56       | 20'-0"            | 16'-0" | 56'-2"  | 21'-8"            | 18'-10" | 56'-6"    | 45             | 64             | 64              | 48" 10hp - 32,000cfm                    |
| MCD-20-16-60       | 20'-0"            | 16'-0" | 60'-3"  | 21'-8"            | 18'-10" | 60'-7"    | 48             | 64             | 64              | 48" 10hp - 32,000cfm                    |
| BWP-20-16          | -                 | -      | -       | 20'-4"            | 16'-2"  | 4'-8 1/2" | -              | -              | 88              | 48" 10hp - 32,000cfm                    |
| PD-16-12           | 15'-0"            | 11'-6" | -       | 16'-0"            | 12'-0"  | -         | -              | -              | -               | -                                       |

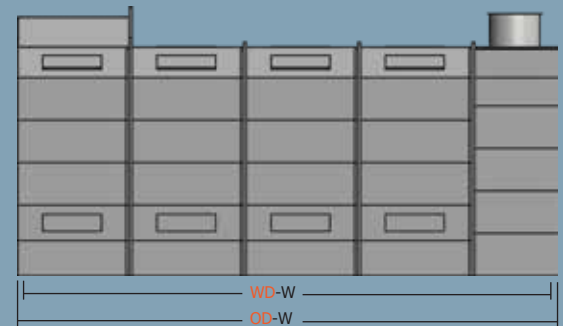
PERSPECTIVE VIEW



FRONT VIEW



SIDE VIEW



NOTE: Model shown includes pant leg plenum with bridge (exhaust) and pant leg plenum with bridge (intake)

**TABLE LEGEND**

MCD = Modified Crossdraft Booth

BWP = Back Wall Plenum: Optional external exhaust plenum (adds depth to the overall dimension)

PD = Product Doors. Optional: Standard, Filtered, Bi-fold, or Tri-fold. Filtered Product Doors can be used in place of an intake plenum

Standard Motors: 1hp and greater are 230/460V three phase, fractional hp motors are 115/230V single phase. Additional motor configurations available.



www.rohner-usa.com  
888-885-7641

# CROSSDRAFT SPECIFICATIONS

| ROOM DESIGN  | STD. | OPT. | ROOM DESIGN  | STD. | OPT. |
|--|------|------|--|------|------|
| 20" x 20" Exhaust Filter frames with wire grids                              | ✓    |      | 3' x 7' Personnel access door with 18" x 24" tempered glass window |      | ✓    |
| 18 Gauge galvanized construction   | ✓    |      | NESHAP compliant multistage filter system                          |      | ✓    |
| Spark resistant tube axial fan w/ TEFC motor                                 | ✓    |      | Filtered product door  |      | ✓    |
| High static exhaust fan  |      | ✓    | Dual entry (drive through) product doors                           |      | ✓    |
| Powder coated white finish   |      | ✓    | Heated makeup air unit (M.A.U.)                                    |      | ✓    |
| Class I Div. II sealed inside access light fixtures with color correct lamps | ✓    |      | Blanket media track  |      | ✓    |

## CROSSDRAFT / MODIFIED DIAGRAM

Model Number = (Ex: ICD-BWP-14-12-24-PPB)

ICD = Class & Booth Type

BWP = Exhaust Type

14 = Working Width

12 = Working Height

24 = Working Depth

PPB = Intake Type

FCP  
Filtered Ceiling Plenum

Intake  
(choose one)

Exhaust  
(choose one)

PD  
Product Door

PPD  
Pantleg Plenum Bridge

BWP  
Back Wall Plenum

Standard Cabin

PPD  
Pantleg Plenum Bridge

FPD  
Filtered Product Door

**NOTE:** Personnel doors are available on cabin sections. Product doors are available in Double Swing, Filtered, Bi-fold, Tri-fold, or Roll-up models.

Booth Exhaust Plenums and filters are designed for particulate removal only! Volatile organic compounds (V.O.C.) removal requires optional equipment.

Specifications and designs are subject to change, and substitutions without notice are at the manufacturer's sole discretion. Customer is responsible for determining the suitability of the equipment for its intended use. Additional equipment or modifications may be required to meet local building and process-specific regulatory codes and are the responsibility of the Customer.



www.rohner-usa.com

888-885-7641